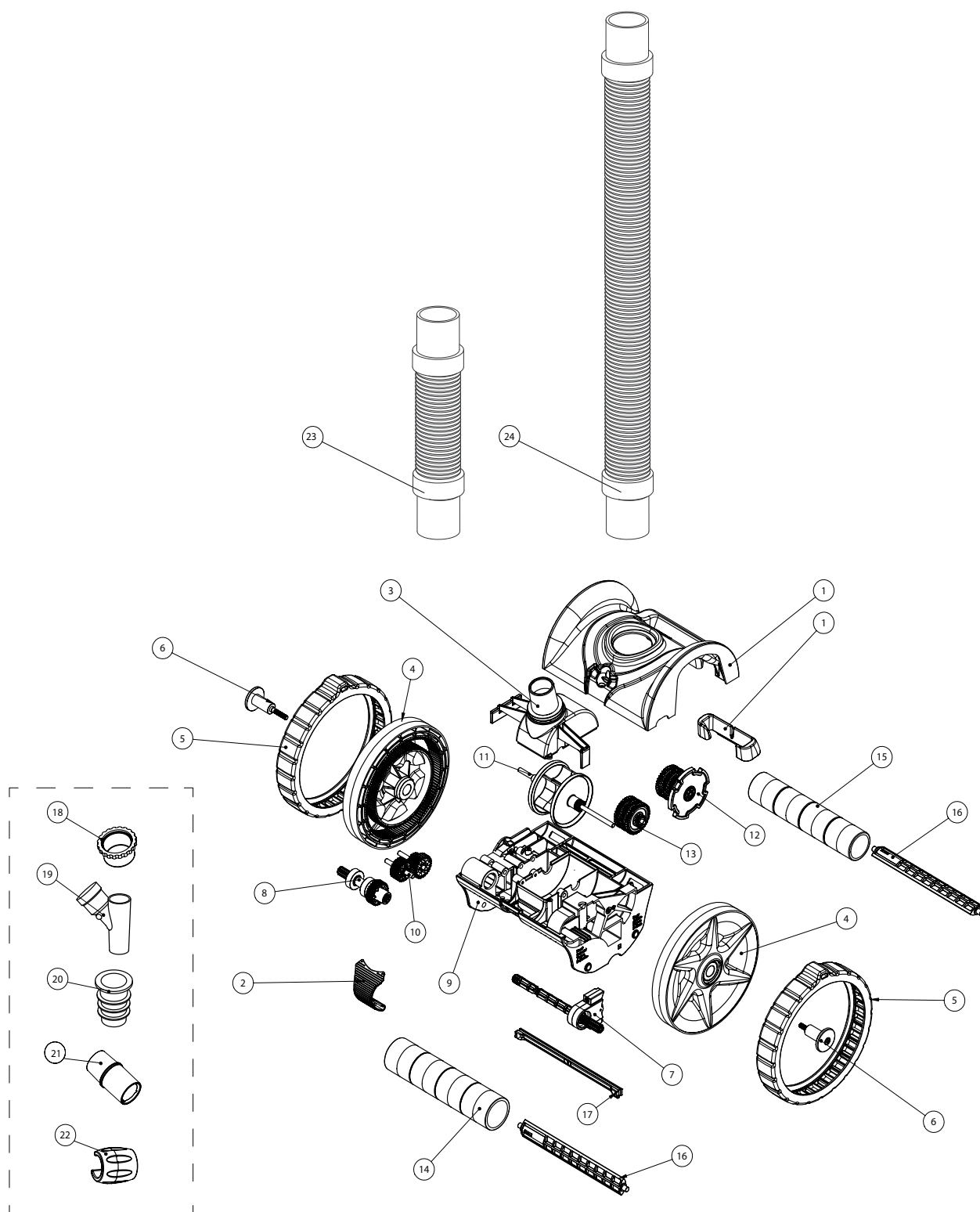


BLUEREBEL™



BLUEREBEL™

Replacement Parts

| No. | Part No. | Description | Part No. Includes* |
|-----|------------|------------------------------|--------------------|
| 1 | 360283 | Top Cover Kit | 1 |
| 2 | 360284 | Buckle Kit | 1 |
| 3 | 360285 | Swivel Kit | 1 |
| 4 | 360286 | Wheel Kit | 1 |
| 5 | 360287 | Tire Kit | 2 |
| 6 | 360288 | Wheel Hub Kit | 2 |
| 7 | 360289 | Left Drive Kit | 1 |
| 8 | 360290 | Right Drive Kit | 1 |
| 9 | 360291 | Bottom Cover Kit | 1 |
| 10 | 360292 | Drive Gear Kit | 1 |
| 11 | 360293 | Turbine Kit | 1 |
| 12 | 360294 | Cam Kit | 1 |
| 13 | 360295 | Cam Gear Kit | 1 |
| 14 | 360296 | Front Roller Kit | 4 |
| 15 | 360297 | Rear Roller Kit | 4 |
| 16 | 360298 | Roller Bar Kit | 2 |
| 17 | 360299 | Wear Bar Kit | 1 |
| 18 | RK1018 | Cap for Regulator Valve | 1 |
| 19 | RK1015 | Regulator Valve | 1 |
| 20 | RK1023B | Cone Adaptor | 1 |
| 21 | RK1019 | Flow Gauge (White Indicator) | 1 |
| 22 | 360300 | Cleaner Hose Float | 1 |
| 23 | 41201-0255 | Short Leader Hose | 1 |
| 24 | 41201-0254 | Suction Hose (1m) | 1 |

* PART NUMBER INCLUDES REQUIRED QUANTITY PER PRODUCT

AUTOMATION

FILTERS

FILTER
SYSTEMS

PUMPS

HEAT PUMPS

CLEANERS

WATER
FEATURES

LIGHTS

SALT
CHLORINATORS

DOSING &
MEASURING

SANITIZERS

WHITE
GOODS

MAINTENANCE
ACCESSORIES

OTHER