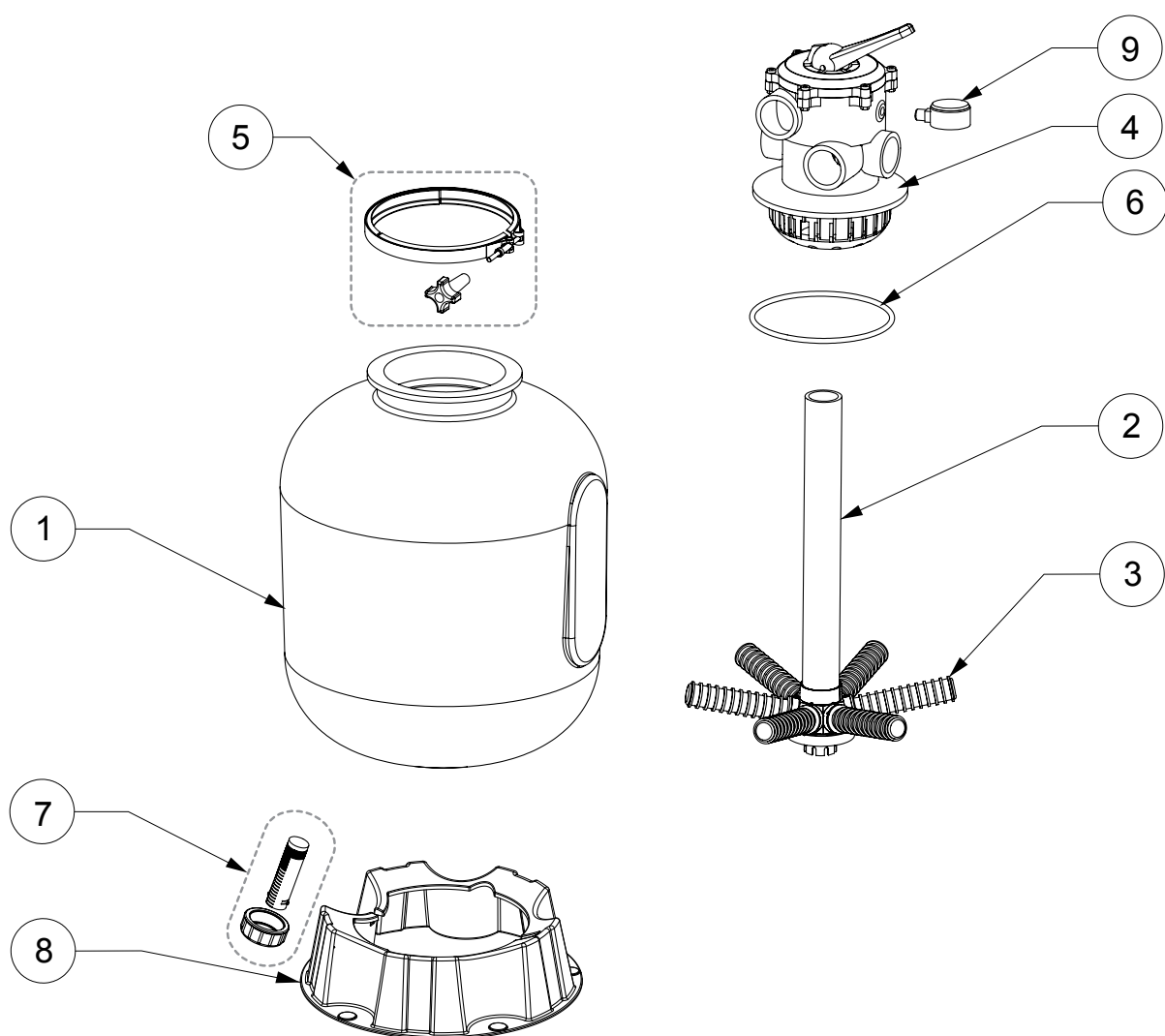


## CRISTAL-FLO™ TOP MOUNT



## CRISTAL-FLO™ TOP MOUNT / CRISTAL-FLO™ TOP MOUNT CLEARPRO

### Replacement Parts

No.	Part No.	Description	Part No. Includes
1	R242000322	Replacement Shell Cristal-Flo TM 15" (T-380)	1
	R242010322	Replacement Shell Cristal-Flo TM 17" (T-430)	1
	R242030322	Replacement Shell Cristal-Flo TM 20" (T-500)	1
	R242040322	Replacement Shell Cristal-Flo TM 24" (T-600)	1
2	R24200MSS6	Stand Pipe Set 15" (incl. Hub)	1
	R24201MSS6	Stand Pipe Set 17" (incl. Hub)	1
	R24203MSS6	Stand Pipe Set 20" (incl. Hub)	1
	R24204MSS6	Stand Pipe Set 24" (incl. Hub)	1
	R24200MSS6CP	Stand Pipe Set 15" Clear Pro (incl. Hub)	1
	R24201MSS6CP	Stand Pipe Set 17" Clear Pro (incl. Hub)	1
	R24203MSS6CP	Stand Pipe Set 20" Clear Pro (incl. Hub)	1
	R24204MSS6CP	Stand Pipe Set 24" Clear Pro (incl. Hub)	1
3	R301904	Lateral 15"	1*
	R302404	Lateral 17" & 20"	1*
	R303004	Lateral 24" & 30"	1*
	R301904CP	Lateral Clear Pro 15" & 17"	1*
	R302404CP	Lateral Clear Pro 20"	1*
	R303004CP	Lateral Clear Pro 24" & 30"	1*
4**	R14965TM10	Valve 1 1/2" 6-Way (15", 17", 20" & 24")	1
	RE272029ND	Valve 2" 6-Way (30") V2013	1
5	RWC1987A	Metal Clamp Band	1
6	RU9369	O-Ring	1
7	14965-0025S	Drain Kit	1
8	RBASEUNI1	Base 15", 17", 20" & 24"	1
	RBASEUNI2	Base 30" V2013	1
9	R152047	Manometer - Pressure Gauge (bottom connection)	1

\* 15", 17", 20" & 24" REQUIRE 6 PIECES / 30" REQUIRES 8 PIECES

\*\* SEE VALVE SHEET FOR VALVE SPARE PARTS

**REMARK :** For 30" Cristal-Flo™ filter with Serialnumber smaller then E111600000 (before August 2011)

When a lateral is broken, the complete standpipe and all laterals need to be replaced

Please review partnumbers mentioned under reference 2 and 3 of above overview

30" Cristal-Flo starting 2013 : See Tagelus for spare parts